

STAINLESS STEEL HOSE SUPPLY BOXES

Stainless Steel Single Temperature and Hot & Cold Hose Boxes Stainless Steel Single Temperature and Hot & Cold Supply and Waste Boxes



Typical Applications: Garages, garbage can wash areas, interior or exterior non-freeze areas, schools, hospitals, clinics, washing areas, restaurants, retail stores, commercial & manufacturing buildings.

Hose & Laser Supply Boxes are designed for interior and exterior walls not subject to freezing. The recessed design prevents accidents common to surface-mounted or protruding hose valves. The boxes are constructed from 18 gage, type 304 stainless steel and have a 16 gage, type 304 stainless steel removable wall flange with a satin finish.

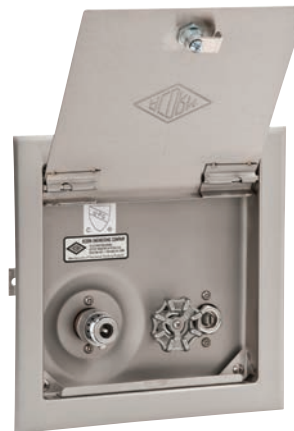
Pb A stainless steel, lead-free option is available on all hose boxes only (suffix option **-SSLF**). The wetted surface of our stainless steel, lead-free models contains less than 0.25% lead and complies with California & Vermont lead-free laws.

- Removable door with cylinder lock.
- Cartridge operated valves.
- Screwdriver stops.
- Vandal-resistant lockshield bonnets.
- 3/4" NPT female supply connections.
- 3/4" NH male hose outlet.
- 2" SPS waste outlet connection with Permaseal waterproof gasket. (8180 - 8186 models)
- Removable loose key wheel handles. (8180 - 8186 models)
- cUPC by IAPMO certified for U.S. and Canada.



Hot & Cold Hose Box
with vacuum breaker (shown-8146)

Less door	
less Vacuum Breaker	8145
with Vacuum Breaker	8146
With door	
less Vacuum Breaker	8155
with Vacuum Breaker	8156



Single Temperature Hose Box
with vacuum breaker (shown-8151)

Less door	
less Vacuum Breaker	8140
with Vacuum Breaker	8141
With door	
less Vacuum Breaker	8150
with Vacuum Breaker	8151



Hot & Cold Supply & Waste Box
with vacuum breaker (shown-8186)

Less door	
less Vacuum Breaker	8185
with Vacuum Breaker	8186



Single Temperature
Supply & Waste Box
with vacuum breaker (shown-8181)

Less door	
less Vacuum Breaker	8180
with Vacuum Breaker	8181



LUMALOY HOSE BOXES

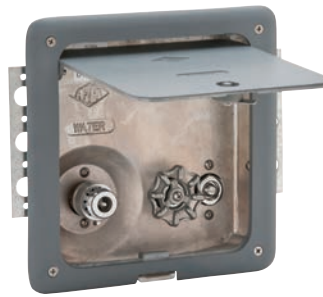
Lumaloy Recessed Single and Hot & Cold Hose Boxes Recessed Single Temperature/Hot & Cold Hose Box with Skid-Resistant Surface



Lumaloy Hose Boxes are designed for interior and exterior walls not subject to freezing. Their recessed design prevents accidents common to surface-mounted or protruding hose valves. Vacuum breaker models prevent accidental contamination of the potable water supply. Models 8170 - 1876 are ideal for installation in markets and similar commercial buildings in foot traffic locations or where a wall box cannot be used.

Pb A stainless steel, lead-free option is available on all models (suffix option **-SSLF**). The wetted surface of our stainless steel, lead-free models contains less than 0.25% lead and complies with California and Vermont lead-free laws.

- Cartridge operated valve.
- Removable loose key wheel handle.
- Screwdriver stop.
- Vandal-resistant lockshield bonnet.
- 3/4" NPT female supply connection.
- 3/4" NH male hose outlet.
- cUPC by IAPMO certified for U.S. and Canada.



Single Temperature Lumaloy Recessed Box with vacuum breaker (shown-8104)

Less door and frame	
less Vacuum Breaker	8101
with Vacuum Breaker	8102
With door and frame	
less Vacuum Breaker	8103
with Vacuum Breaker	8104

Models 8101 (not shown) - 8104 & 8106 (not shown) - 8109

- Lumaloy box and frame.
- Removable frame and door with prime coat finish.
- Door with recessed cam latch.

Typical Applications - Interior or exterior non-freeze areas, garages, schools, restaurants, retail stores, commercial & manufacturing buildings.



Hot & Cold Lumaloy Recessed Box with vacuum breaker (shown-8109)

Less door and frame	
less Vacuum Breaker	8106
with Vacuum Breaker	8107
With door and frame	
less Vacuum Breaker	8108
with Vacuum Breaker	8109

Models 8170 (not shown) - 8176

- Stainless steel box with bead blast interior.
- Removable cast Lumaloy frame with door.
- Diamond tread skid-resistant surface for floor installation.
- Cam lock.

Typical Applications - Non-freeze areas, schools, restaurants, food processing plants.



Single Temperature Floor Recessed Box with vacuum breaker (shown-8171)

less Vacuum Breaker	8170
with Vacuum Breaker	8171



Hot & Cold Floor Recessed Box with vacuum breaker (shown-8176)

less Vacuum Breaker	8175
with Vacuum Breaker	8176



TEMPERATURE CONTROL BOXES & HOSE VALVES



Temperature Control Boxes

Typical Applications - Shower/locker rooms, schools, gyms, exercise/sports facilities.

These temperature control boxes offer a water supply ideal for small applications and isolated locations. Each unit is constructed of 18 gage, type 304 stainless steel with a satin finish and delivers up to 7.5 GPM with 40 PSI minimum inlet pressure and adequate water volume. Both recessed and surface-mounted models are available.

- Brass valve.
- Removable wall frame and hinged locking door.
- Hot and cold mixing valves.
- Concealed check stops.
- Temperature gage calibrated from 0°F to 200°F.
- Manual temperature limiting stop.
- ½" NPT female supply connections.
- cUPC by IAPMO certified for U.S. and Canada (models 1752 & 1753).

Surface Mounted Pressure Balancing
(shown-1751)

Surface Mounted Thermostatic
(shown-1753)



Recessed Pressure Balancing
(shown-1750)

Recessed Thermostatic
(shown-1752)

Hose Valves

Typical Applications - Interior/exterior non-freeze areas, schools, rest stops, restaurants, office & manufacturing buildings, retail stores.

Hose valves are recommended for installation in interior and exterior locations not subject to freezing. The valves have a rough, brass finish body. Each unit can provide up to 7.5 GPM with 40 PSI minimum inlet pressure and adequate water volume. This series includes units that can be installed directly on the wall or on a supply pipe.

Pb A stainless steel, lead-free option is available on models 8120 & 8121 (suffix option -SSLF). The wetted surface of our stainless steel, lead-free models contains less than 0.25% lead and complies with California and Vermont lead-free laws.

- Vandal-resistant lockshield bonnet.
- Removable loose key wheel handle.
- Integral wall flange.
- Available in bent, straight and inverted nose, with and without the vacuum breaker.
- Optional polished or rough chrome plated finish.
- ¾" NPT female supply connection.
- ¾" male hose outlet.
- cUPC by IAPMO certified for U.S. and Canada.

Bent Nose - Flange
with vacuum breaker (shown-8120)

Bent Nose - no Flange
without vacuum breaker
(shown-8125)



less Vacuum Breaker **8120**
with Vacuum Breaker **8121**



less Vacuum Breaker **8125**
with Vacuum Breaker **8126**

Straight Nose
without vacuum breaker
(shown-8130)

Inverted Nose
with vacuum breaker (shown-8136)



less Vacuum Breaker **8130**
with Vacuum Breaker **8131**



less Vacuum Breaker **8135**
with Vacuum Breaker **8136**



HEMO-DIALYSIS BOXES

Recessed Hemo-Dialysis Supply & Waste Box

Typical Applications - Hospitals, clinics.



Hemo-Dialysis boxes have been especially designed for dialysis machines that utilize RO (reverse osmosis) and DI (deionized) water, mixed with dialysate saline concentrate. This water is very corrosive and is commonly called "hungry water," because it eats away steel, some stainless steels, cast iron, copper and brass metals commonly used in supply and waste systems. There are two basic types of dialysis machines. One mixes dialysate into the RO-DI water inside the machine and the other requires pre-mixed water. When only one type is used, the single valve models are satisfactory. When both types are used, a two valve model is required.

Models 8190 - 8196

- Type 316 stainless steel with bead blast interior.
- Removable wall flange of type 304 stainless steel with satin finish.
- Hinged door with cylinder lock.
- PVC ball valve with EPDM seals.
- Discharge hose bracket with rubber grommet.
- 2-3/8" OD waste outlet.
- cUPC by IAPMO certified for U.S. and Canada.



Box without Door
two valve supply (shown-8190)



Box without Door
one valve supply (shown-8191)



Box with Door
two valve supply (shown-8195)



Box with Door
one valve supply (shown-8196)



LASER & REMOTE SUPPLY BOXES

Laser Recessed Supply & Waste Box

Typical Applications - Hospitals, clinics.

The Laser Recessed Supply & Waste Box is constructed from 18 gage, type 304 stainless steel with a glass blast finish interior. The exterior of the box includes mounting clips for anchoring the box to the wall. The removable wall flange is 16 gage, type 304 stainless steel and includes a door with a cylinder lock. All exterior surfaces are polished to a satin finish.

- Cartridge operated supply valve with vacuum breaker and 3/4" NPT female quick disconnect fitting.
- Screwdriver stop.
- Vandal-resistant lockshield bonnets.
- Waste connection with 3/4" NPT female quick disconnect fitting.
- Quick disconnect socket fittings with positive shutoff.
- 3/4" NPT female supply connections.
- 2" SPS waste outlet connection with Permaseal waterproof gasket.
- cUPC by IAPMO certified for U.S. and Canada.



Laser Recessed Supply & Waste Box
(shown-8198)

Remote Supply Boxes

Typical Applications - Remote supply for wash down areas where temperature control and a remote hose connector is needed, such as in schools, restaurants, hospitals, and garbage can washing areas.

Remote Supply Boxes are used to supply water to flushing rim drains, can washing drains, shower heads, soap machines, and hospital equipment. Models with a temperature gage are recommended where it is desired to know the temperature of the water being supplied.

- Type 304 stainless steel with satin finish.
- Cartridge operated mixing valve.
- Concealed individual stops.
- Atmospheric vacuum breaker.
- 1/2" NPT female supply and outlet connections.
- Temperature gage calibrated from 0°F to 200°F.
- Removable wall frame and/or hinged locking door.
- cUPC by IAPMO certified for U.S. and Canada.



Recessed Single Use Remote
with temperature gage (shown-8200)

with Temperature Gage **8200**
less Temperature Gage **8201**



Recessed Dual Use Remote
with temperature gage (shown-8210)

with Temperature Gage **8210**
less Temperature Gage **8211**



Surface Mounted
Single Use Remote
with temperature gage (shown-8205)

with Temperature Gage **8205**
less Temperature Gage **8206**



Surface Mounted
Dual Use Remote
with temperature gage (shown-8215)

with Temperature Gage **8215**
less Temperature Gage **8216**

